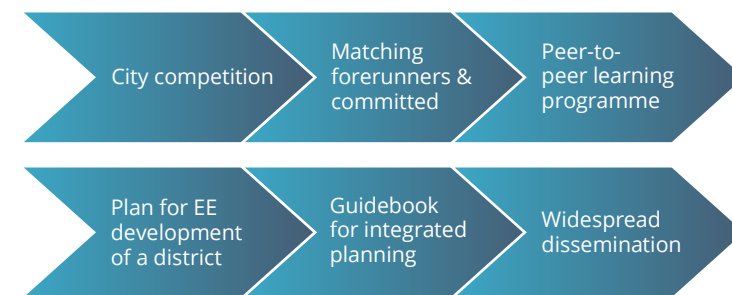


MULTIPLY IN A NUTSHELL

MULTIPLY aims at encouraging local authorities to uptake **integrated urban planning measures** at district level by engaging them in a dedicated **peer-to-peer learning programme** under which they will share and discuss how to combine elements of sustainable transport, energy and spatial planning. This will be achieved through:

- organising **NATIONAL COMPETITIONS** for selecting cities for the exchange programme;
- selecting **FORERUNNER CITIES**, who already have some experience in integrated urban planning, and **COMMITTED CITIES**, who have ambitions to develop in a more sustainable way;
- launching **PEER-TO-PEER LEARNING PROGRAMME**, which shall increase the capacities of municipal politicians and staff to effectively plan, finance, communicate and implement the energy transition;
- organising series of **TARGETED WORKSHOPS** and **EXCHANGES** addressing specific needs of involved cities;
- supporting committed cities in the development of comprehensive **PLANS FOR ENERGY EFFICIENT DEVELOPMENT OF A MODEL DISTRICT**;
- widely **SHARING MULTIPLY** results, guidelines and recommendations!

MULTIPLY step by step:



Implementation period: December 2018 – November 2021

MEET OUR CONSORTIUM!

MULTIPLY is implemented by a consortium of 7 motivated partners from 7 European countries, with great experience in the field of energy efficiency and sustainable urban planning:



Deutsche Umwelthilfe e. V. (DE) – project coordinator;
www.duh.de



Association of Municipalities Polish Network “Energie Cités” (PL);
www.pnec.org.pl



Energiaklub (HU); www.energiaklub.hu



Legambiente Associazione (IT);
www.legambiente.it



Climate Alliance Austria (AT);
www.klimabuendnis.at



IVL Swedish Environmental Research Institute Ltd. (SE); www.ivl.se



Posad B.V. (NL); www.posadmaxwan.nl

More information about MULTIPLY may be found at:
www.citiesmultiply.eu



The MULTIPLY project has received funding from the European Union's Horizon 2020 research and innovation programme under grant agreement No 785088



municipal
peer-to-peer learning in
integrating transport,
land-use planning
and energy policy
at district level

WHAT MULTIPLY WANTS TO ACHIEVE?

- Initiate exchange between excellent forerunners and ambitious committed cities;
- Activate public authorities by reaching out to decision makers, planning staff and communication staff of municipalities;
- Enable key actors to empower each other to become drivers of the European energy transition;
- Overcome barriers hampering making use of the full energy efficiency potential of local territories;
- Increase awareness of the importance of future-proof, integrated urban development;
- Disseminate expertise and guidelines concerning implementation of the elements of integrated urban planning.

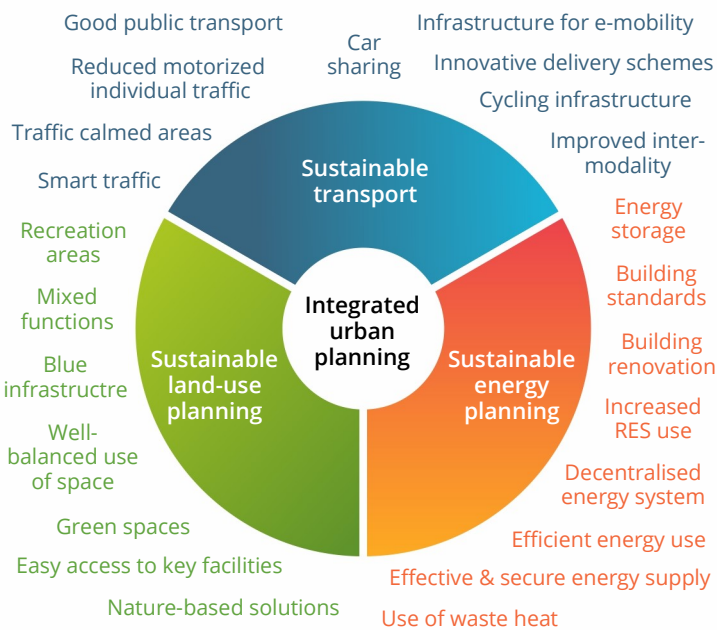
Join MULTIPLY community! With us you will not only learn how to develop your city in an integrated way, but also establish new contacts and engage in valuable networking. All for the benefit of your citizens, local environment and the climate.



photo: Chuttersnap on Unsplash

WHAT IS INTEGRATED URBAN PLANNING?

By integrated urban planning we mean planning that combines elements of **sustainable transport**, **sustainable land-use** and **sustainable energy**. Thus it establishes grounds for concerted actions allowing to reach for full energy-saving potential of the territory, at the same time making it a convenient and comfortable place to live.



Integrated urban planning answers complex challenges faced by today's cities, which require whole-system solutions. Let's remember that good urbanism reverberates well beyond energy savings - it has effects on public health, affordable housing, land conservation and builds social and economic quality.

CITY COMPETITION

6 national city competitions aim at identifying forerunner and committed cities to be involved in the MULTIPLY peer-to-peer learning scheme.

Who are we looking for?

- **Forerunner cities** with model integrated energy efficient districts and solutions, who are willing to share their experience with the others;
- **Committed cities** with the ambition to implement similar solutions on their territory.

What we assess?

In case of forerunners...

- state of the art in the presented district/settlement;
- implemented integrated urban planning elements, including measures in the area of sustainable transport, energy and land-use planning.

In case of committed...

- clear vision of how the city would like to develop and what would like to learn from forerunners;
- clear idea for the district/settlement to be covered by the plan for energy efficient development.

In case of both...

- motivation to develop in a sustainable and integrated way;
- ambition to lead the way towards European energy transition;
- will to actively involve in peer-to-peer and networking activities.

FORERUNNER CITIES

Forerunners are cities who already tested and implemented integrated planning solutions, either on a municipal or a district level, and already have some interesting experiences and results to share. Within the MULTIPLY peer-to-peer learning scheme they will share their expertise and experience with the others, also helping us to gather model solutions and guidelines for integrated urban planning.

COMMITTED CITIES

Committed cities are these who have the ambition and potential for the implementation of new, integrated urban projects supporting energy efficiency on a municipal or district level but don't have such experiences yet. They already have a clear vision how they want to develop in the long-term but need improved capacities to plan and implement concerted energy efficiency measures.

Why to become a forerunner or committed city?

- To get involved in the inspirational MULTIPLY peer-to-peer learning programme.
- To exchange ideas for integrated urban measures and learn from each other.
- To network with other cities willing to develop in a sustainable way.

MULTIPLY PEER-TO-PEER LEARNING PROGRAMME

Peer-to-peer learning is a capacity building format designed to facilitate cooperation and knowledge exchange between people working in similar areas of expertise or experiencing similar challenges. Within MULTIPLY we engage in peer-to-peer learning process cities committed to take a lead towards energy transition by following the concept of integrated urban planning on their territories.

The MULTIPLY peer-to-peer learning programme involves:

- direct communication between forerunner and committed cities;
 - facilitated meetings;
 - workshops;
 - study tours;
- giving the opportunity for:
- exchange of knowledge and experience;
 - mutual inspiration;
 - concrete problem solving;
 - knowledge development;
 - building up a peer network.

With increased capacities, the committed cities will develop comprehensive **plans for energy efficient development of a model district** in their territory.